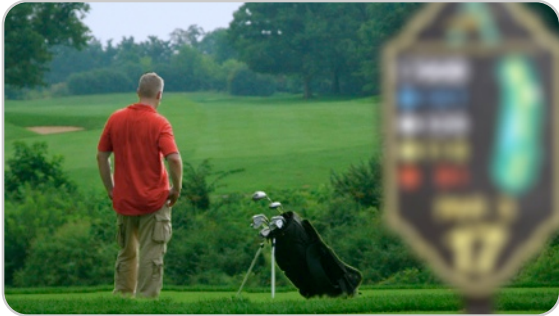


Synthetic Pictures

| | | | |
|----------------|-----------|--------------|----------------------|
| Client | SkyCaddie | Title | "Enabler Pops Out 1" |
| Agency: | NYCA | Job # | 08-024 |



Shot 1: GOLFER ON TEE-BOX ON PAR 5 NEXT TO YARDAGE PLATE THAT READS: HOLE 4 PAR 5 (BLUE) 498 (WHITE) 456 (RED) 423

SFX: Calm morning, distant birds chirp

Music: Sparse and simple cinematic



Shot 2: Close up on the Golfer as he clearly questions his shot. Dolly to reveal Caddy.

ENABLER : It's 209 to carry the ravine to the fairway...



Shot 3: Device cutaway



Shot 4: We see Golfer alone and the fairway over his shoulder.



Shot 5: Enabler cont.

ENABLER: ...And 262 to carry the left bunker.

Synthetic Pictures

| | | | |
|----------------|-----------|--------------|----------------------|
| Client | SkyCaddie | Title | "Enabler Pops Out 1" |
| Agency: | NYCA | Job # | 08-024 |



Shot 6 (edit option): Nasty fairway bunker cutaway.



Shot 7: A confidence light bulb goes off in the Golfer's head and....

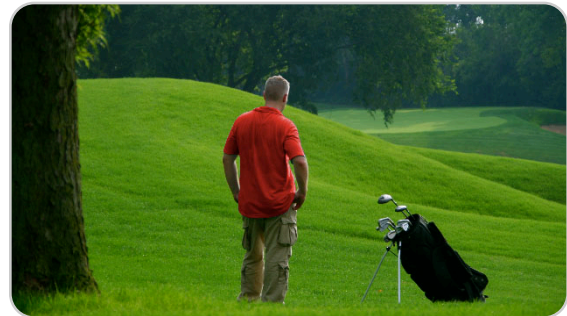
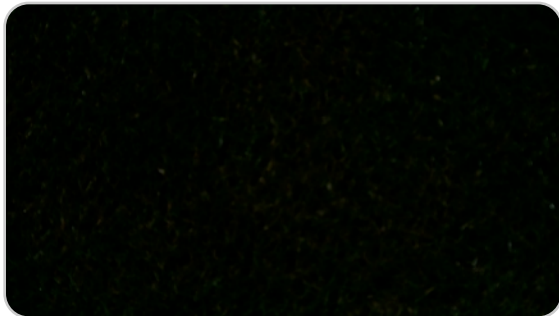


Shot 8: Golfer confidently pulls cover off of 3 wood



Shot 9 (edit option): ...swing. Enabler is clearly not there.

SFX: WHOOSH



Shot 10: Open to find the Golfer off the fairway with an obstructed view of the green.

Synthetic Pictures

| | | | |
|----------------|-----------|--------------|----------------------|
| Client | SkyCaddie | Title | "Enabler Pops Out 1" |
| Agency: | NYCA | Job # | 08-024 |



Shot 11: Reveal Enabler

ENABLER: "There's a creek at 137. You should fly the ball 155 to the right side."



Shot 12: Device cutaway



Shot 13 (edit option): Creek cutaway

SFX: Creek water running



Shot 14: Golfer contemplating which club to use.



Shot 15: Cut back to 2 shot of Golfer & Enabler. Golfer now confidently understands the right shot.



Shot 16: GOLFER'S FACE BUILDS WITH CONFIDENCE.

| | | | | |
|---------------------------|----------------|-----------|--------------|----------------------|
| Synthetic Pictures | Client | SkyCaddie | Title | "Enabler Pops Out 1" |
| | Agency: | NYCA | Job # | 08-024 |



Shot 17: Quick club pull from bag.
SFX: quick club pulling sound



Shot 18 (edit option): Quick cut to tail end of swing. Enabler is clearly not there.
SFX: ball crack noise

